

SILICONE HOSE, 2 PLY, UNI M8L / M9 SILVER / M2 VITON

[Product Overview]

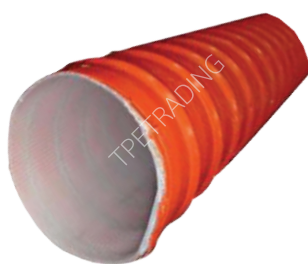
Material	2 Ply-Silicone (M9) / Viton (M2 Viton) coated glass fibre fabric.
Temperature	-80°C ~ 310°C
Features	<ul style="list-style-type: none"> • Embedded broze plate steel wire helix. • Twin outer glass cord. • Light, Link resistant. • Low air friction loss properties due to additional inner layer. • always smooth bore also in tight bends. • Good application in low pressure range.
Options	Other colour (silver and black)



Dia. Inside (mm.)	Dia. Outside (mm.)	Weight (g/m)	Bendradius (mm.)	Pressure (BaR)	Vacuum mm WS/mm WG	Length (m.)	Dia. Inside (mm.)	Dia. Outside (mm.)	Weight (g/m)	Bendradius (mm.)	Pressure (BaR)	Vacuum mm WS/mm WG	Length (m.)
19	21.60	200	19	2.5	7000	4	95	98.74	1200	95	2.0	4000	4
22	25.20	260	22	2.5	7000	4	102	106.20	1270	102	1.8	3500	4
25	28.20	300	25	2.5	7000	4	108	112.20	1350	108	1.8	3000	4
32	35.20	400	32	2.5	5800	4	114	118.20	1400	114	1.7	2800	4
38	41.20	420	38	2.4	5800	4	121	125.70	1500	121	1.6	2300	4
41	44.20	500	41	2.4	5800	4	127	131.70	1600	127	1.5	2100	4
45	48.20	510	45	2.4	5800	4	140	144.70	1700	140	1.4	1800	4
51	54.74	530	51	2.4	5300	4	152	157.20	1800	152	1.1	1700	4
57	60.74	570	57	2.3	5300	4	160	165.20	1900	160	0.9	1500	4
63	66.74	600	63	2.2	4600	4	178	183.20	2050	178	0.8	1400	4
70	73.74	800	70	2.2	4600	4	203	208.20	2250	203	0.6	1000	4
76	79.74	900	76	2.1	4400	4	229	234.20	2500	229	0.5	800	4
83	86.74	1000	83	2.1	4000	4	254	259.20	2700	254	0.4	700	4
89	92.74	1100	89	2.1	4000	4	305	310.20	3250	305	0.2	500	4

UNI M9S 1.25 MM FDA LINER

[Product Overview]



Features	<ul style="list-style-type: none"> • Line inside 1.25 mm. silicone 65 shore A VMQ food FDA/BGA • 0.3 mm. silicone polyester Fabric • Copper coated strong spring wire • Steel silicone coated glass • Red Oxide • Twin glass cord silicone coated
Temperature	-60°C ~ 220°C Optional version to 300°C

Dia. Inside (mm.)	Dia. Outside (mm.)	Weight (KG/M)	Bendradius (mm.)	Pressure (BaR)	Vacuum mm WS/mm WG	Length (m.)	Dia. Inside (mm.)	Dia. Outside (mm.)	Weight (KG/M)	Bendradius (mm.)	Pressure (BaR)	Vacuum mm WS/mm WG	Length (m.)
32	35.20	400	60	2.5	5800	4	127	131.70	1600	280	1.5	2100	4
38	41.20	420	70	2.4	5800	4	140	144.70	1700	280	1.4	1800	4
41	44.20	500	80	2.4	5800	4	152	157.20	1800	300	1.1	1700	4
51	54.74	530	100	2.4	5300	4	160	165.20	1900	310	0.9	1500	4
57	60.74	570	110	2.3	5300	4	178	183.20	2050	400	0.8	1400	4
63	66.74	600	120	2.2	4600	4	203	208.20	2250	400	0.6	1000	4
70	73.74	800	140	2.2	4600	4	229	234.20	2500	470	0.5	800	4
76	79.74	900	150	2.1	4400	4	254	259.20	2700	500	0.4	700	4
102	106.20	1270	200	1.8	3500	4	305	310.20	3250	700	0.2	500	4